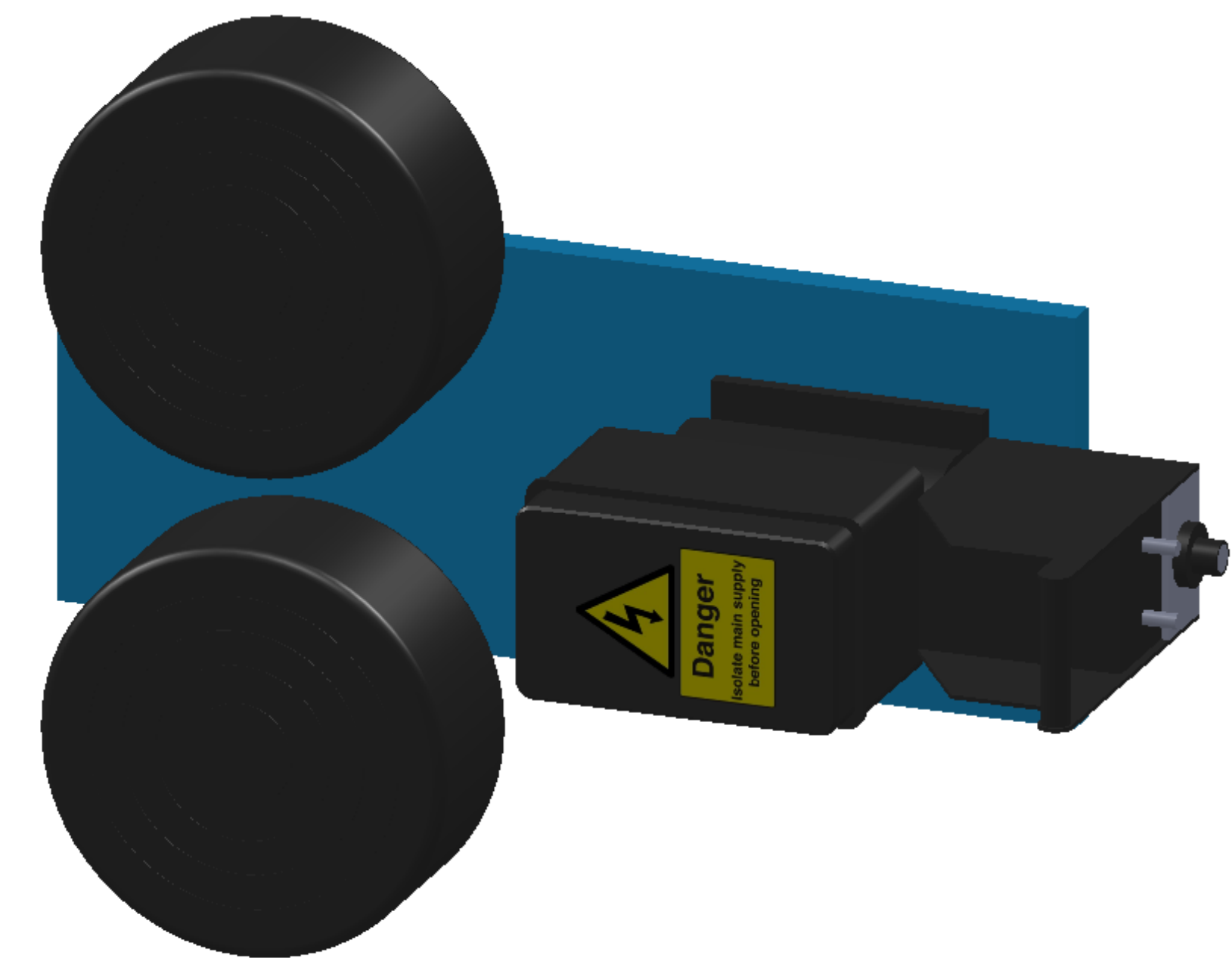



**Pedestal Mount Feed Unit**  
HA 9140 UFP

- Adjustable height  
36"-56"
- Heavy 27" pedistal base for maximum stability
- Optional dolly wheels available on request
- Swivels for minimal stress on conduits



**Wall Mount Feed Unit**  
HA 9140 UFW

- Mounts to any flat surface
- Spool cases mounted for quick and easy spool reloading
- Low-profile design keeps work areas open

UNLESS OTHERWISE SPECIFIED: DIMENSIONS ARE IN INCHES SURFACE FINISH: TOLERANCES: LINEAR: ANGULAR:		FINISH:	DEBUR AND BREAK SHARP EDGES	DO NOT SCALE DRAWING	REVISION: A1
DRAWN: AT		SIGNATURE:	DATE: 1/7/10	 TITLE: Wire Feed Options DWG NO.	
CHK'D:					
APP'VD:					
MFG:					
Q.A.			MATERIAL:		