

HA 6102

Molybdenum

Product Code: 106102
Technical Data Sheet

Revision: # 000
 Dated: 01/08/09

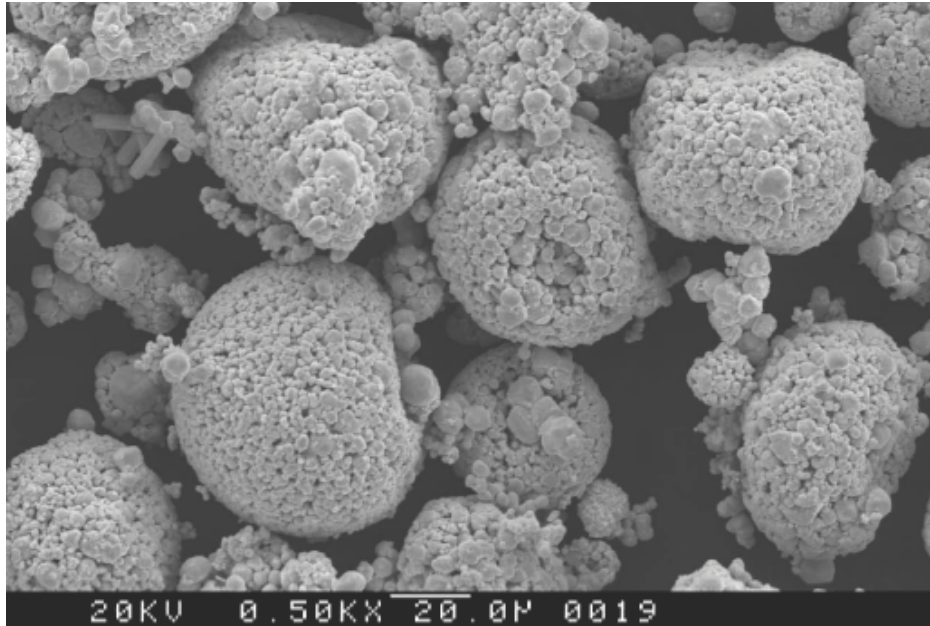


Figure 1: Typical Powder Morphology (SEM 200X)

1. PHYSICAL PROPERTIES

HA 6102 is a 99% Pure Molybdenum spherical powder. High density coatings with high tensile adhesion strengths are typical characteristics of this material. HA 6102 coatings are resistant to electric arc erosion in oxidizing or atmospheric conditions. HA 6102 is used in sliding wear applications within the automotive industry.

Formula	99% (Mo)
Name	Molybdenum
Product Description	Pure Metal, Refractory
Melting Point [°C] Molybdenum	2,610
Apparent Density (typical) [g/cm ³] ASTM B212	2.5 – 3.2
Hall Flow (typical) [sec/50g] ASTM B213	30 - 50

HA 6102

Molybdenum

Product Code: 106102
Technical Data Sheet

Revision: # 000
Dated: 01/08/09

2. CHEMICAL PROPERTIES

2.1 Chemical Analysis

Element	Molybdenum	Others
% max	99.8	0.2
% min	99.3	0.7

3. POWDER MORPHOLOGY AND PARTICLE SIZE DISTRIBUTION

3.1. Powder Morphology

- 3.1.1. Powder has spherical shape as produced by agglomeration and atomization processes.
- 3.1.2. Typical Powder Morphology using SEM is shown in Figure 1.

3.2. Particle Size Distribution

- 3.2.1. The typical powder size range measured with Tyler according to ASTM B214 is -90+45 microns.